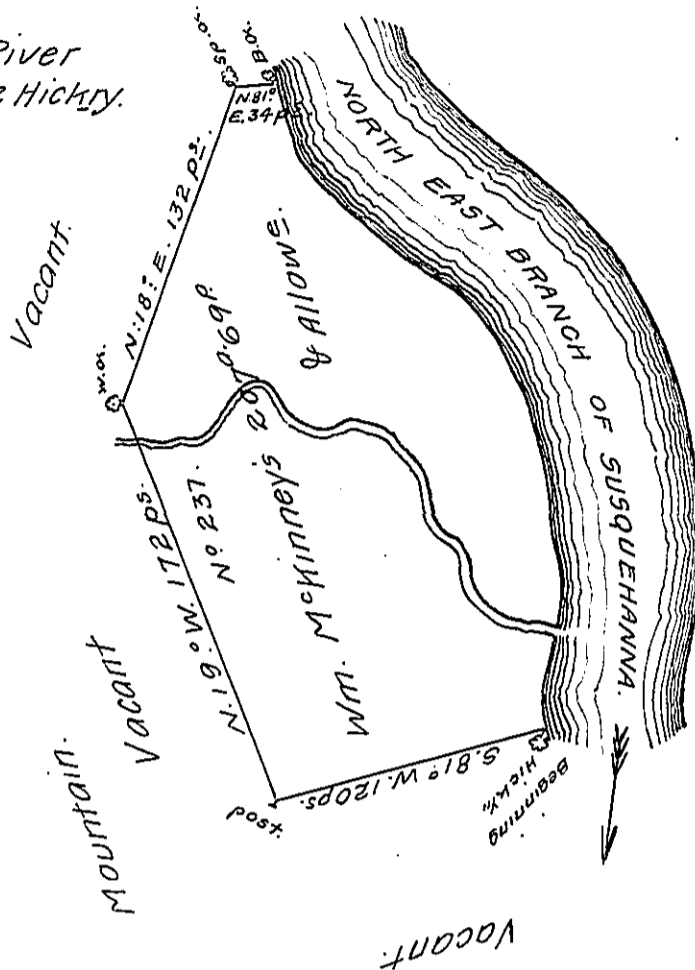


Traverse down the River from the Black Oak to the Hickry.

- 1<sup>st</sup>. S. 11°: E. 34 #
- 2<sup>d</sup>. S. 37°: E. 38 #
- 3<sup>d</sup>. S. 49°: E. 78 #
- 4<sup>th</sup>. S. 32°: E. 16 #
- 5 S. 15°: E. 36 #
- 6 South: 34 #
- 7 S. 5°: W. 78 #



A Draught of a tract of Land called Tipperarah Situate on the West side of the North East branch of Susquehanna River about two miles above Waphalpane in Northampton County containing two hundred & seven Acres & sixty nine perches besides the usual allowance of 6 Cent. for Roads &c. Surveyed 28<sup>th</sup>. June, 1771 for William McKinny. In Pursuance of an order dated the third day of April, 1769. Number, 237.

To John Lukens, Esq;  
Survey<sup>r</sup> General.

by me Cha<sup>s</sup>. Stewart, Dep<sup>y</sup> Surr<sup>e</sup>.

IN TESTIMONY that the above is a copy of the original remaining on file in the Department of Internal Affairs of Pennsylvania, made conformably to an Act of Assembly approved the 16th day of February, 1833, I have hereunto set my Hand and caused the Seal of said Department to be affixed at Harrisburg, this ninth day of February, 1911.

*Henry Houck*  
Secretary of Internal Affairs.